

Eastside Spraying Service, Inc.

has been part of the “green industry” in the Puget Sound area since 1947.

We are still family-owned and operated—thus enjoying a long-term relationship with our customers and their families.

Our total healthcare approach to each landscape allows us to maintain the standard of excellence that our customers can rely on from our professional team of licensed technicians.

**LOCATED AT TOTEM LAKE
KIRKLAND, WASHINGTON**

**Call Us Today for a
Free Estimate!**

P.O. Box 681

Kirkland, Washington

Local: 425.823.2600

Toll Free: 1.866.823.2606

www.eastsidespraying.com



SPRING TREE, SHRUB & LAWN CARE



**Founder John Behey
1920 - 2006**



*Family Owned & Operated
Since 1947*

Spring Tree and Shrub Care



Professional Tree and Shrub Care Makes A Difference

Proper tree care is an investment that can lead to substantial returns. Well-cared-for trees are attractive and can add considerable value to property.

Eastside's approach is to keep your trees and shrubs as healthy and vigorous as possible in order to strengthen their natural defenses against disease and insects.

Spring services will protect your ornamentals:

- **Soil Injection**—(see below)
- **Foliar Spray**—Keeping leaves healthy and green throughout their growing cycle
- **Disease and Insect Control**—Unhealthy plants attract unwanted pests. Certain insects and diseases are common to the Puget Sound area.

See inside for more details . . .



Soil Injection Special Root Feed

Our special root feed has been carefully formulated to **include micronutrients and beneficial microbes.**

Applied directly into the root zone, application helps your trees and shrubs be more resistant to disease, insect damage, and environmental stress—improving the overall health and beauty of your landscape.

Spring Lawn Care Program

Spring Lawn Checklist:

The best prevention for a weed-free lawn is to provide such great growing conditions that the turf crowds out the weeds.



Spring is the time to make sure you do the following:

- Fertilize to improve or maintain turfgrass quality
- Aerate to avoid compaction
- Treat for broadleaf weeds



Certified Arborist On Staff

Brian Cosby, ISA-CA



IPM Manager
Brian Cosby
successfully completed the **Certified Arborist Examination** administered by the **International Society of Arboriculture.**

An **arborist** by definition is an individual who is trained in the art and science of planting, caring for, and maintaining individual trees.

We at **Eastside** are proud of the professionalism and dedication that Brian has expressed to his profession by achieving the title of “Certified Arborist.”

Brian can be contacted at brian@eastsidespraying.com for your tree and plant care questions.

In Celebration of Our 60th Anniversary!



BIOPELLETS ~ MICROBIAL TREATMENT
100% NATURAL

Concentrated nutrition for
annuals, perennials, house

THANK YOU! To our customers that helped us reach this milestone. To commemorate this event, our **spring invoice bags** will contain a free package of **biopellets**—a natural microbial treatment for household and container plants as well as vegetable gardens.

Microbial activity is necessary for the breakdown of organic matter and assists in the natural biochemical changes needed to supply nutrients to plants. Soil microorganisms are the key link between mineral resources and plant growth.

At **Eastside** we make every effort to integrate microbial products with our conventional methods. Destructive insects and harmful diseases target weak and unhealthy plants. **A healthy landscape is the best defense for a beautiful yard.**

To purchase additional biopellets, use our website's "Request An Estimate" page at www.eastsidespraying.com or e-mail sue@eastsidespraying.com.

Identifying Common Tree & Shrub Problems

Dogwood Anthracnose

Dogwood Anthracnose is caused by a fungus very common in Western Washington. The damage usually appears from May to early July, although damage can be noticed at any time during the growing season.



Photinia Leaf Spot

These fungical leaf spot infections vary from red to purple in appearance. This disease appears to be most severe on plants in low-lying or shady areas.



Treatment: In early spring use our fungicide applications to keep these diseases under control. We recommend 2 applications for dogwood and 3 applications for photinias approximately 21 days apart.

Aphid

Infested leaves can be covered with honeydew (aphid droppings). This sticky substance drips and settles on objects below infested trees—including cars, patio furniture, and walkways (often carried into home and onto carpets). In addition, honeydew attracts ants and other home-invading insects.



Trees and plants that are most likely to be affected by aphids are maples, oaks, birches, spruces, roses, annual bedding plants, and many more.

Treatment: A regular spray program will reduce over-population of this pest.

Identifying Common Lawn Problems

Fungus Turf Diseases

Red Thread: Pinkish-red threads that form around the leaf blades and bind them together. This disease is more pronounced when soil is under-fertilized.



Red Thread

Fusarium Patch: First seen as areas of pale yellow grass. Patches will be irregularly circular in outline and range from two inches to one foot in diameter.



Fusarium Patch

Diseases generally occur when weather is cool, wet, and overcast—usually in spring and fall.

Treatment: One or two applications of fungicide should minimize severe cases.

Prevention: Aerate often followed by a regular fertilization schedule.

Crane Fly Larvae

If you noticed this mosquito-like insect last fall, its off-spring (larvae—also known as leatherjackets) has been feeding below the surface of your lawn on root hairs, roots, and crowns.



Crane Fly

How to check for crane fly larvae in your lawn:

- Look for grub-like tubular worms
- Take a sampling from the margins of suspected damaged areas
- Signs other than lawn discoloration—look for birds (especially robins and starlings).



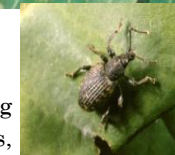
Crane Fly Larvae



Other Signs of Landscape Problems

Root Weevil

Root weevils tend to forage on new or current growth. Most damage will be noticed on rhododendrons, azaleas and viburnum. These munchers spend the winter eating plant roots and laying their eggs.



In mid-spring, the young mature into adult offenders, damaging plants by eating the leaves, usually at night. Root weevils leave a characteristic notching pattern on the edges of leaves.

Treatment: Monthly applications from May to September will control root weevil over population.

Slugs

Known for: Nighttime foraging.

Life cycle: Warm rains in early spring start the massive hatching of overwintering eggs. Slugs love the moist underground during the day where roots and seedlings satisfy their voracious appetite. Their night-time activity is most noticeable on fleshy foliage.



Slug

Evidence of assault: A trail of slime and mosaic artwork of holes on your unsuspecting plants.